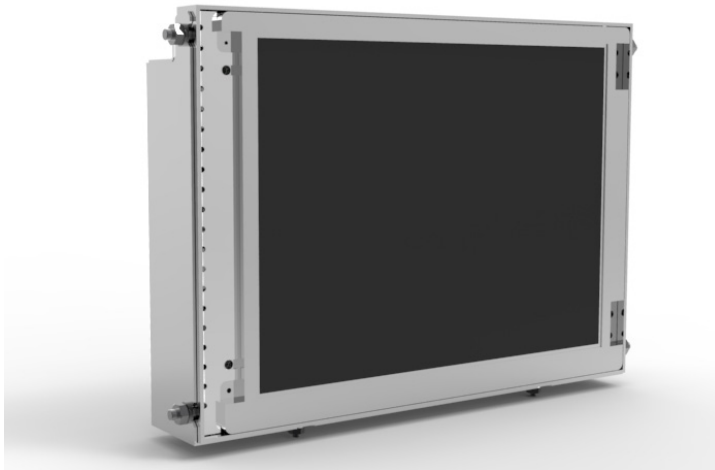


# 8.4" Displays

Overview



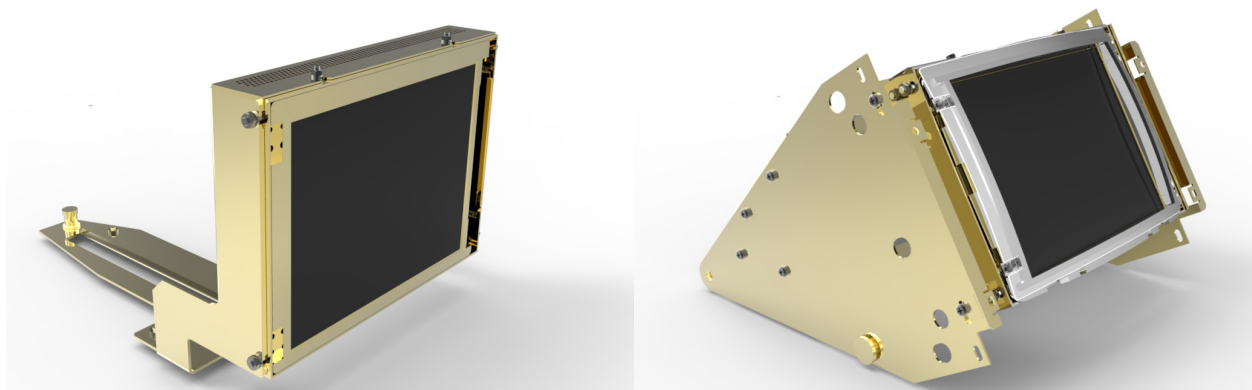
- Ideal for installation in new ATMs, Kiosks and Self Service equipments
- Suitable for replacement of installed base of 10" CRT monitors (mono and color)
- Range of brackets available for compatibility with major ATMs

Features	Standard Brightness	Sunlight Readable
Size	8.4" (21 cm)	8.4" (21 cm)
Active area	170.4 x 127.8 mm	170.4 x 127.8 mm
Pixel format	800 x 600 x 3	800 x 600 x 3
Display mode	Normally white	Normally white
Brightness	350 cd/m2 typ.	1300 cd/m2 typ.
Contrast	450:1 typ	600:1 typ
Brightness uniformity	70%	85%
Input Signal	Analog RGB (0.7 Vpp typ. 1.2 Vpp max)	Analog RGB (0.7 Vpp typ. 1.2 Vpp max)
Connector	Mini D-Sub 15 female	Mini D-Sub 15 female
Horizontal frequency	25kHz to 110 kHz	25kHz to 110 kHz
Vertical frequency	40 Hz to 75 Hz	40 Hz to 75 Hz
Pixel clock	140 MHz	140 MHz
Power Input	12 Vdc; 0.9 A max	5Vdc + 12Vdc; 4 A max
Power consumption	10.8 W max	30 W max
Power Connector	Molex connector (39-30-0020)	Molex connector (39-01-2040)
Plug & Play	VESA DDC1/2B	VESA DDC1/2B
Approvals & Certifications	EN60950-1 UL60950-1 CSA C22.2 n. 60950-1 FCC CFR47 P.15 EN61000-6-3:2001 (Emissions) EN61000-4-2 (Electrostatic Discharge) EN61000-4-3 (RFI Radiated Susceptibility) EN61000-4-4 (Electrical Fast Transient) EN61000-4-6 (RFI Conducted Susceptibility) CE	EN60950-1 UL60950-1 CSA C22.2 n. 60950-1 FCC CFR47 P.15 EN61000-6-3:2001 (Emissions) EN61000-4-2 (Electrostatic Discharge) EN61000-4-3 (RFI Radiated Susceptibility) EN61000-4-4 (Electrical Fast Transient) EN61000-4-6 (RFI Conducted Susceptibility) CE
Operating Temperature	0 to +50° C	0 to +50° C
Storage Temperature	-25 to + 60° C	-10 to + 50° C
Backlight life	50,000 hours minimum	50,000 hours minimum
Supplied accessories	VGA Analog cable 1.5 mt male-male	VGA Analog cable 1.5 mt male-male Light ambient sensor

# 8.4" Displays

Cross References

Original P/N		Compatible P/N	
Equivalent to		High Brightness	Standard Brightness
009-0017176			
009-0022401	G0800059	G0800059	G0800049
009-0019850			
009-0023169 Rev.C	G0800048	N/A	G0800048
009-0023395 Rev.B	G0800049	G0800059	G0800049
009-0009987	MOCCD10062XX-06	N/A	G0800048
009-0016785			
009-0009987	MOCCD10062XX-07	N/A	G0800048
009-0016785			
009-0011683			
009-0016786	MOCCD10062XX-08	G0800059	G0800049
009-0017176			
009-0018632			
009-0009631			
009-0016786	MOCCD10062XX-09	G0800059	G0800049
009-0009631			
49-009030-000B	N/A	N/A	G0800007
49-009030-000A	N/A	N/A	G0800027
49-009030-000B	N/A	G0800030	G0800029
1064 ATM Range	N/A	G0800038	G0800034
1074 ATM Range	N/A	G0800020	N/A



**Additional solutions available upon request.**

**Global Display Solutions** - [www.gds.com](http://www.gds.com)

**GDS Europe**  
**T.** +39 0445 428991  
**E.** [emea@gds.com](mailto:emea@gds.com)

**GDS America**  
**T.** +1 815 282 2328  
**F.** +1 815 282 0297  
**E.** [america@gds.com](mailto:america@gds.com)

**GDS Asia**  
**T.** +886 2 2298-1480  
**F.** +886 2 2298-1131  
**E.** [asiapacific@gds.com](mailto:asiapacific@gds.com)